

Bioanalyzer - Microfluidics analysis of RNA, DNA, and Proteins

Overview

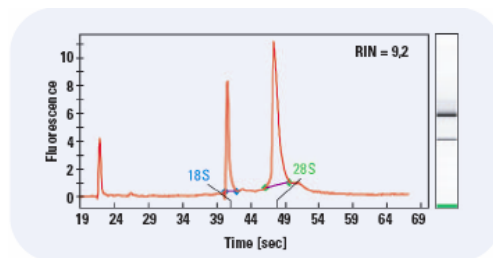


- The Agilent 2100 bioanalyzer uses a microfluidics-based platform for the analysis of proteins, DNA and RNA. The analysis does an automated quality control, sizing and quantification of the samples. Key features are:

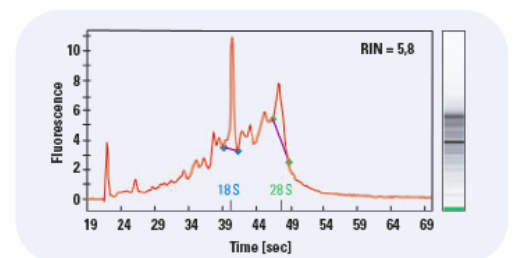
- Fast results – 10 samples in 30 minutes
- Sizing and quantification in one assay
- Minimal sample consumption – 4 μ l
- Easy comparisons
- Digital operation and data

Examples

- This is an example of an RNA samples:

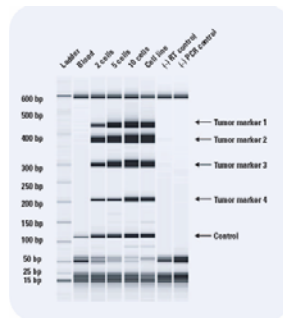


Intact total RNA

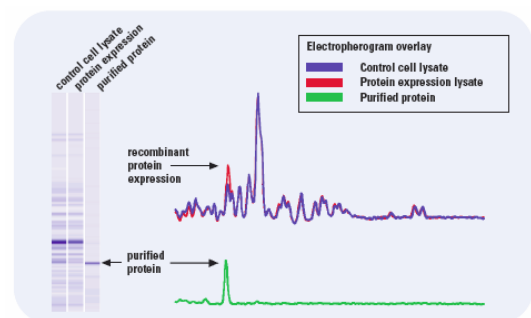


Partially degraded RNA

- These are examples of a PCR product and protein samples:



Multiplex PCR analysis of four tumor markers for early metastatic detection. Data kindly provided by AdvaGen



Purification of a recombinant protein.

Location

- MBB 1.426FA

Pricing

- All pricing dependent on current chip prices and number of samples run. Ask for current procedures and pricing.